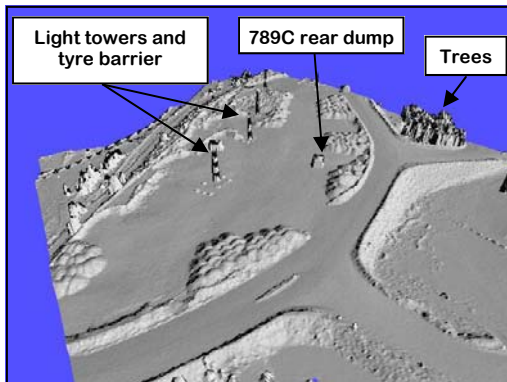


## Ready, Set, Go..... Atlass off and running!!!

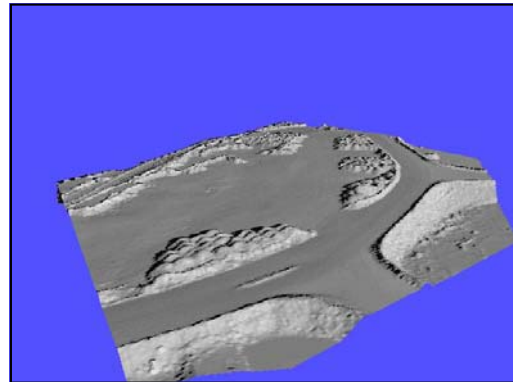
During the last quarter Atlass personnel have been diligently working to achieve some major milestones:

- Harrier 56/G3 commissioning and trial flights were successfully completed
- Atlass Aviation Pty Ltd was issued with an AOC from CASA allowing the company to undertake commercial aviation activities
- First commercial data delivered to a customer from the trial surveys

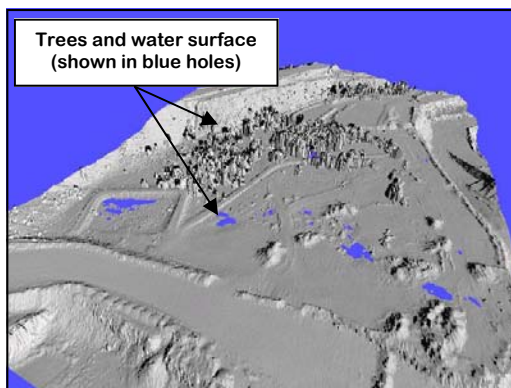
The Atlass Team is now busily gathering operational experience with the hardware and software. So in this months Atlass Update rather than tell you all about it we thought we would show you in a series of rendered 'images' from gridded (1m \* 1m) lidar data.



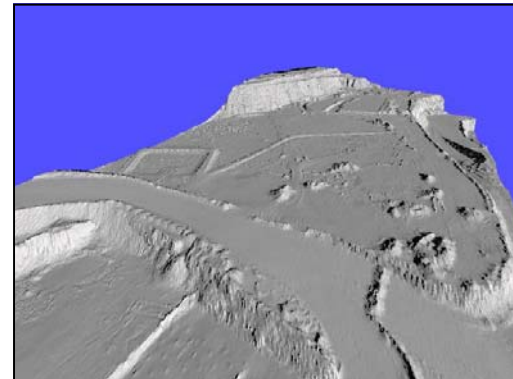
ROM stockpile collected during trial flight showing trees and lighting towers



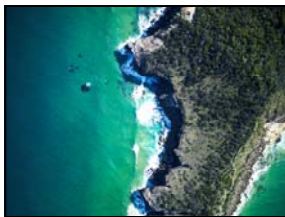
ROM Stockpile after filtering applied removing trees, light towers and vehicles.



Pre-mining area showing topsoil stockpiles, trees and ponded water



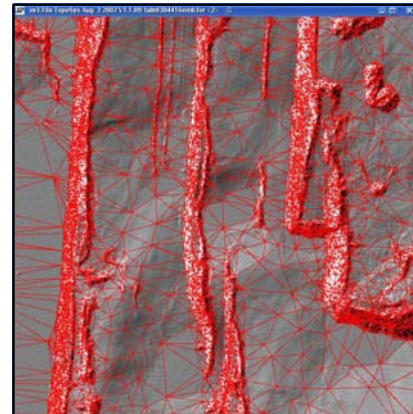
Pre-mining area with trees filtered out and water holes filled to water level (see if you can pick the production drill holes)



One of the perks of aerial surveying — the view from the office can be quite rewarding!

The intelligent data thinning algorithms are in the last phase of testing

This will ensure that your data is accurate and useable



Atlass (Aust) Pty Ltd  
ABN 69 122 815 936

**Call now for details of our introductory service discount!**

**Matt McCauley**

**Phone: 0448 410 218**

**Email: matthew.mccauley@atlass.com.au**