

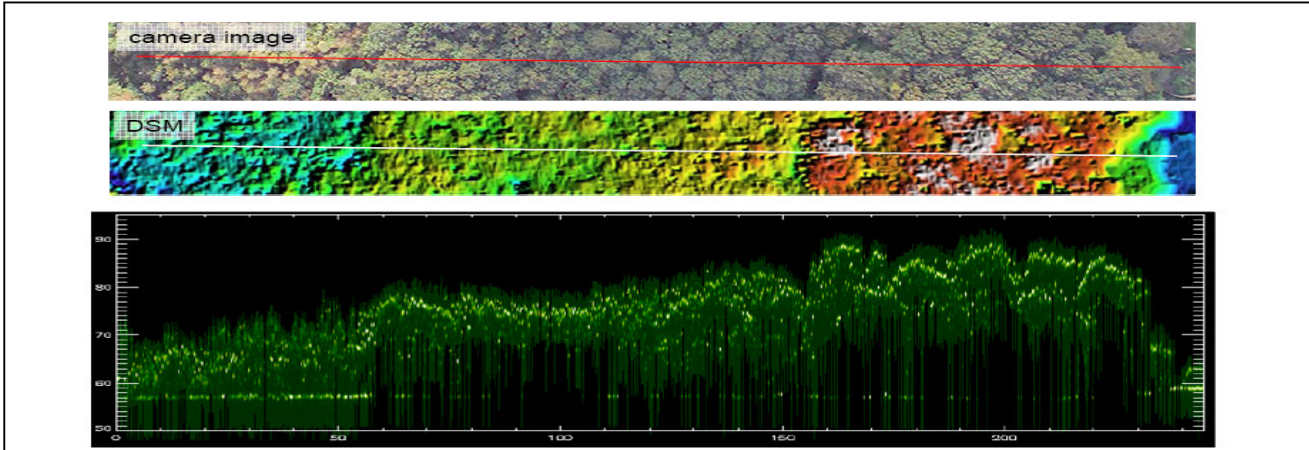


"Giving you the Whole Picture"

Features

- Rapid, full waveform data capture (upto 200Khz)
- Forest inventory calculations
- Canopy height and density
- CIR images for forest health determination
- Target classification based on intensity, RGB, CIR or laser data

Forestry Surveys



Laser Class Classification

- Class 1** - Considered to be incapable of producing harmful radiation levels
- Class 2** - This type of laser may present some danger if viewed directly for periods exceeding 0.25 seconds
- Class 3** - Hazardous under direct beam and specular reflection viewing conditions.
- Class 4** - The direct beam, specular reflection and diffuse reflections are hazardous to the eye and skin. Class 4 lasers can be a fire hazard.

Atlass operates a Class 1 laser system - Eye Safe at >2.0m

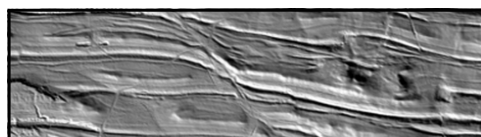


Additional Services

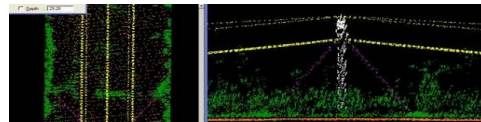
High Resolution Aerial Photographs



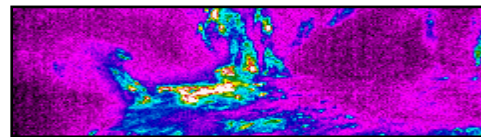
Topographic Surveys



Utility surveillance



Thermal Imaging



For more information or a Quote:

Please Contact: Matt McCauley

Phone: 0448 410 218

Email: matthew.mccauley@atlass.com.au

