



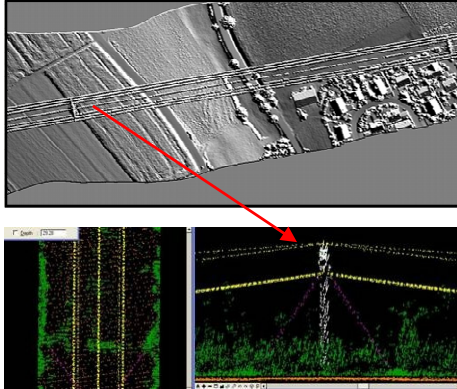
"Giving you the Whole Picture"

Features

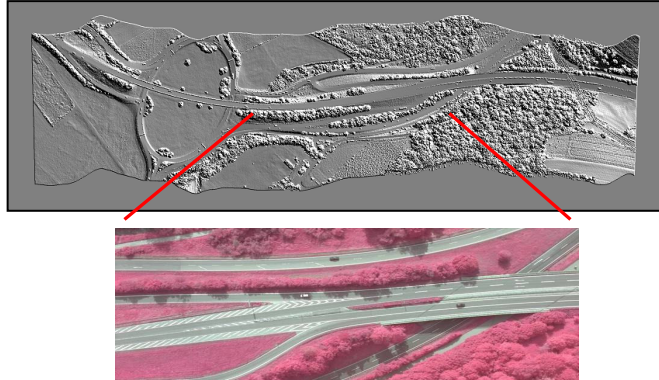
- Fast data acquisition
- High accuracy (<0.05m relative vertical)
- High data density 4 - 30 points per sqm
- Photographs and survey data collected simultaneously
- Ability to penetrate dense ground cover

Utilities & Construction Site Surveys

Powerline Surveillance



Corridor Surveys for Road and Pipelines



Laser Class Classification

- Class 1** - Considered to be incapable of producing harmful radiation levels
- Class 2** - This type of laser may present some danger if viewed directly for periods exceeding 0.25 seconds
- Class 3** - Hazardous under direct beam and specular reflection viewing conditions.
- Class 4** - The direct beam, specular reflection and diffuse reflections are hazardous to the eye and skin. Class 4 lasers can be a fire hazard.

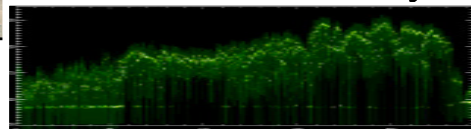
Atlass operates a Class 1 laser system - Eye Safe at >2.0m

Additional Services

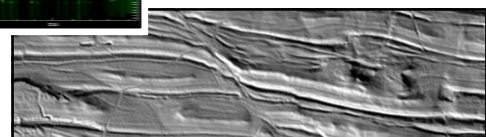
High Resolution Aerial Photographs



Full Waveform Forestry



Topographic Surveys



For more information or a Quote:
Please Contact: Matt McCauley
Phone: 0448 410 218
Email: matthew.mccauley@atlass.com.au

